

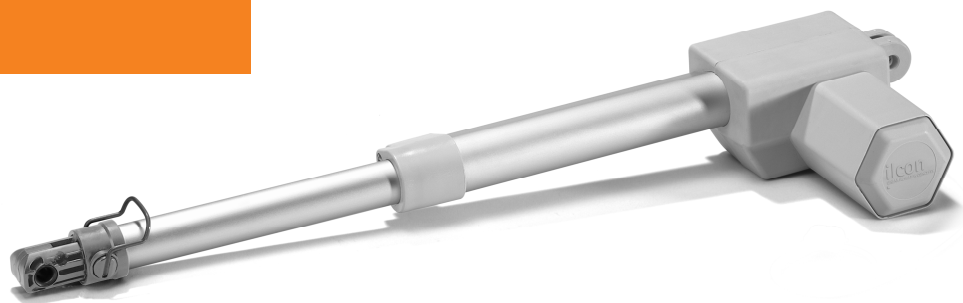
## Single Actuator

# ilcoDrive DZ

### Fields of application

The powerful yet quiet single actuator solution for applications in lifter and hospital environments. As the product is certified to EN 60601-1:2017 it is the perfect solution for the health care market. Combined with the attachable *ilcoPower DP* control box it is a great solution for various applications.

**ilcon**  
LINEAR ACTUATOR CONCEPTS



### Standard model

- Up to 6000N Push
- Up to 3000N Pull
- Build in limit switches
- Reinforced polymer housing
- Optional CPR
- Optional MNA
- Optional POT / Hall
- Optional Only push option

### Recommended control system modules

- ilcoPower SMPS (Various options)
- ilcoControl Handset (Various options)

### Product details

Parameter	Comment	Min	Typical	Max	Unit
Supply voltage			24	35	V
Power consumption	under nominal load 6000N		4,5A	9	A
Type of protection			III		
Protection class			IP X4	IP X6	
Force	Push		6000	6000	N
Force	Pull		3000	4000	N
Stroke length	Various options			500	mm
Connection options			2-PIN LS Plug		
speed	without load		5		mm / s
speed	with nominal load 6000N optional 6,3mm/s		3,5		mm / s
Color	Light grey		Light Grey		
Duty cycle	Max 2 minutes continuous operation followed by 18 min. stop		10		%
Storage temperature	non-condensing	0		+40	° C
Ambient temperature	non-condensing	+5		+35	° C
Approvals			CE, UL, CUL		

**ilcon GmbH**  
**Linear Actuator Concepts**  
Hertzstr. 1-3  
27318 Hoya  
Germany

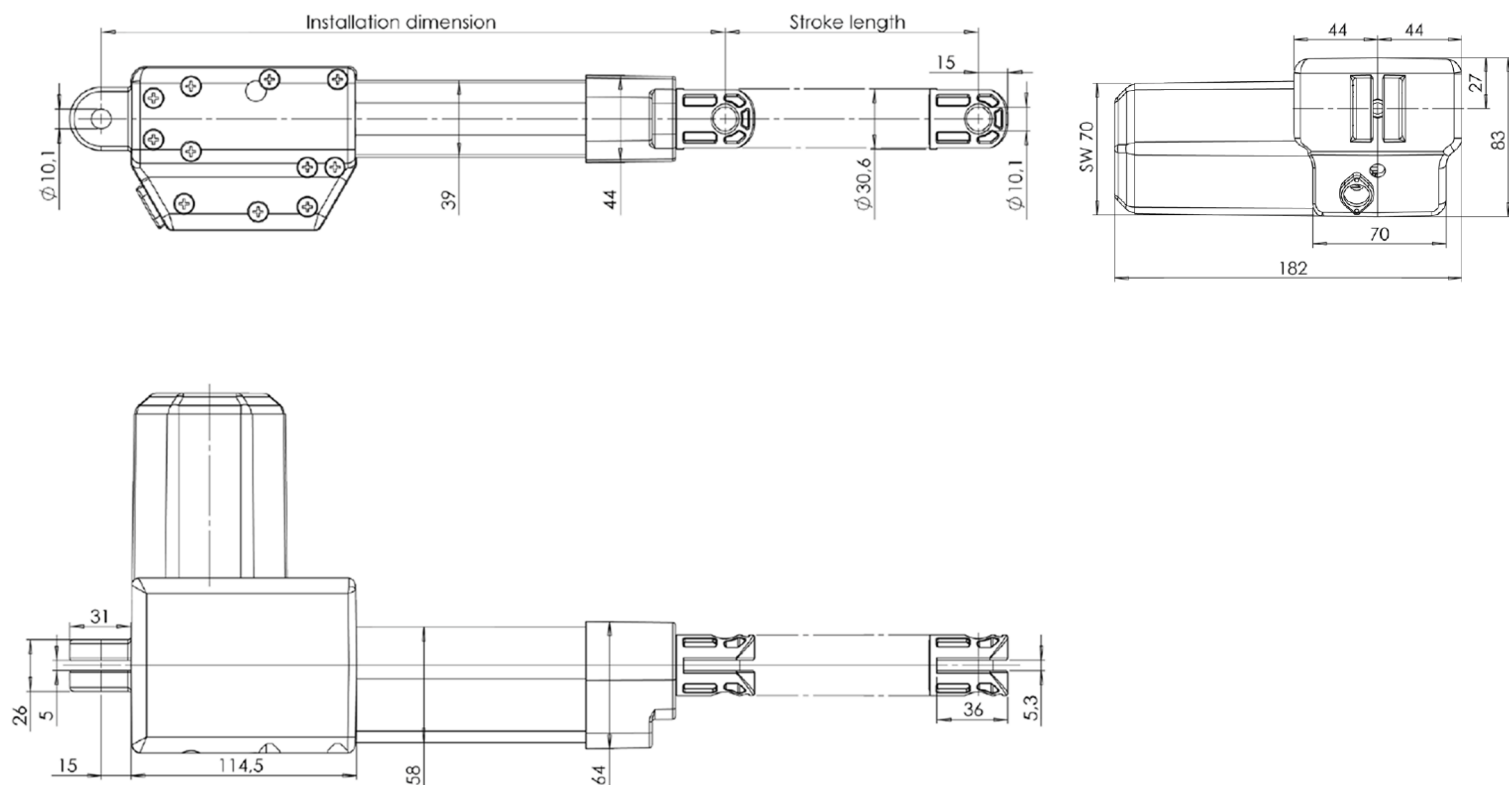
Phone +49 4251 816610-10  
www.ilcon.com  
info@ilcon.com

**ilcon Actuator Corp.**  
**Linear Actuator Concepts**  
11511 James Street  
Holland, MI 49424  
USA

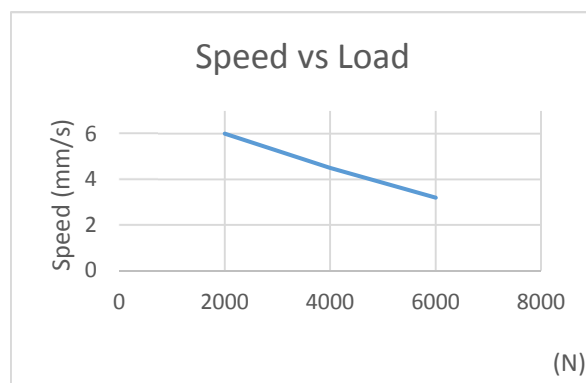
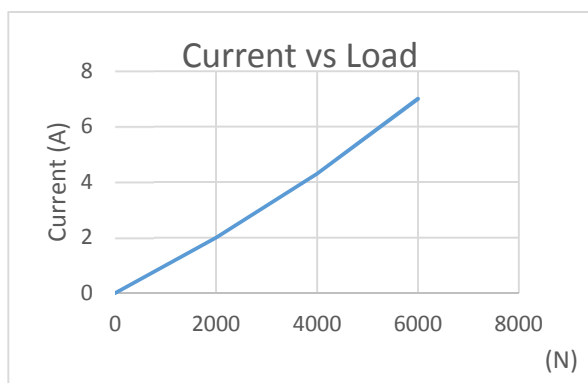
Phone (616) 796-3235  
www.ilcon.com  
info@ilcon.com

For more detailed data sheets, please contact our Sales Department. We would be pleased to provide a documentation according to your product specifications. Mistakes and printing errors excepted. If you have any questions, please do not hesitate to contact us.  
Dated: 06/2017

## Dimensional drawing



## Performance



## Order key

①	②	③	④	⑤	⑥
XX-	XX	XX	XX	XX	X
DZ-	GR-	180-	500-	24-	A -

(Example is preferred type)

①	Type of drive	DZ = ilcoDrive DZ
②	Color of housing	GR = grey RAL 7035 SW = black RAL 9005
③	Installation dimension in mm	min. 180mm (+/- 2mm)
④	Stroke in mm	max. 500mm
⑤	Motor Voltage	12/18/24
⑥	Push/pull	A = push-pull B = only push